

AN EASY WAY TO CROSS AN OCEAN

SHIPPING A YACHT

CAPTAIN PRISCILLA TRAVIS

CAPCA

July 25, 2016





Shipping a yacht

- REASONS TO SHIP
- FACTORS TO CONSIDER
- ASSISTING A CLIENT
- SHIPPING COMPANIES
- LOADING AND OFFLOADING

REASONS TO CONSIDER SHIPPING

- Length of time for trip, seasonal considerations
- The vessel is new or untested
- It's a motor vessel without long-range capabilities
- The age or condition of the vessel
- Difficult conditions may be possible on the ocean route
- Experience of available crew
- Size of vessel, equipment level
- Shore support at departure country or port

COST OF SAILING

- Cost of preparing the vessel for crossing an ocean
- Condition of engine, powertrain and propulsion system
- Spare parts and tools needed for voyage
- Crew's mechanical and technical knowledge and skills
- Condition of spars, running and standing rigging
- Sail condition and inventory. Storm sails?
- Safety equipment: comprehensive and up-to-date?
- Charts and cruising guides
- Tank capacity and estimated fuel cost
- Harbor dues and cost for marinas
- Provisioning and other expenses for crew
- Crew transportation costs
- Specialized communication equipment and services
- Expenses of taking care of a land residence
- Cost for a captain and delivery crew
- Marine insurance for the yacht for the voyage

QUESTIONS TO ASK

- What is included in the shipping quote?
- Who insures the vessel during the shipping process?
- Customs procedures at departure and arrival ports?
- Can a sailing yacht have its mast up?
- Other requirements for the vessel while aboard the ship?
- Procedure for loading and offloading at anchor or pier?
- Crew transport to and from ship?
- Access to pier and security requirements?
- Can crew be accommodated aboard the ship for the trip?
- Requirements by the vessel's marine insurer?

PLANNING A QUOTE FOR A CLIENT

- Preliminary research to guide the client's initial decision
- Research to decide on shipping company & arrange logistics
- Arrange professional consultations for client, if needed
- Transportation to and from yacht and ship
- Port security escort fees, if any
- Your fee while working with the vessel
- Incidental costs, attorney fees?

LEAVE THE DRIVING TO US!



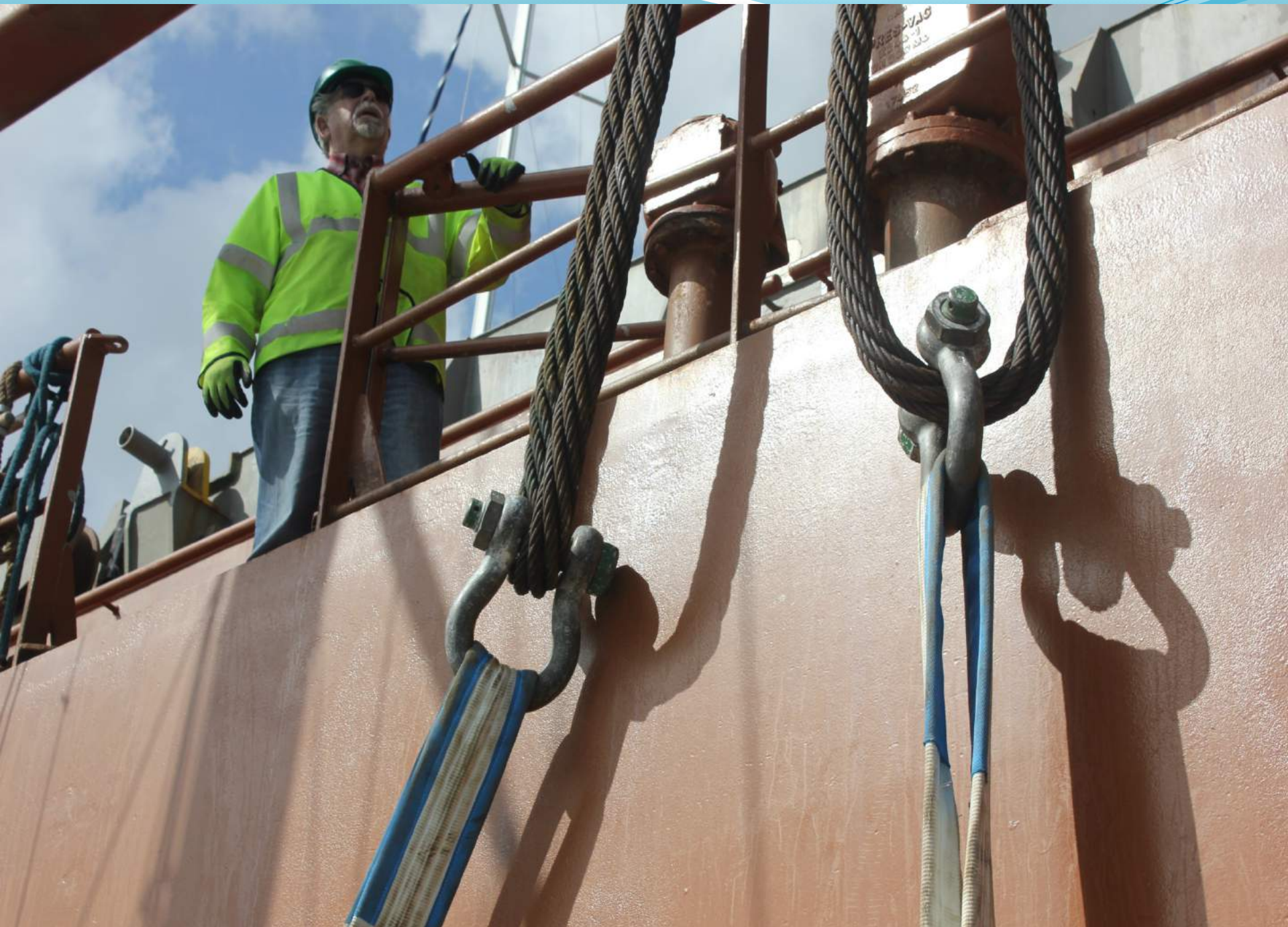
YACHT TRANSPORT COMPANIES

- Sevenstar Yacht Transport
www.sevenstar-yacht-transport.com
- Dockwise Yacht Transport
www.yacht-transport.com
- Short video of Dockwise float on-float off ship loading at
<https://www.youtube.com/watch?v=4Nb-LMc3sgM>

These are the two main companies.



Saimaagracht, 2005, 610 ft.
Netherlands









NOMAD

spilthoff
AMERICAN












© Yachtshipping



If you would like to ask more
questions about the process
of shipping a yacht, contact
me at

pmtravis41@atlanticbb.net



CAPCA

CHESAPEAKE AREA
PROFESSIONAL
CAPTAINS ASSOCIATION