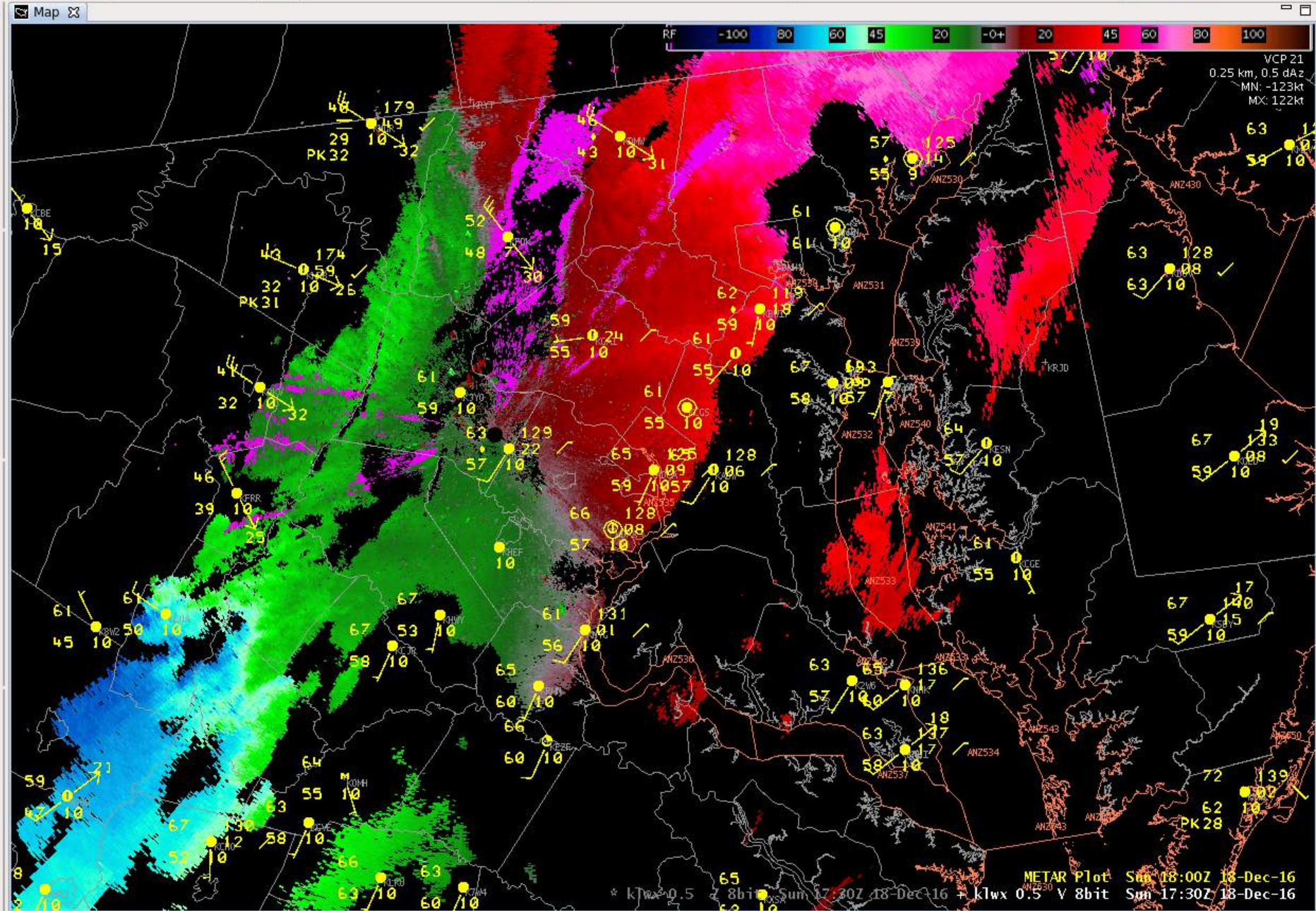
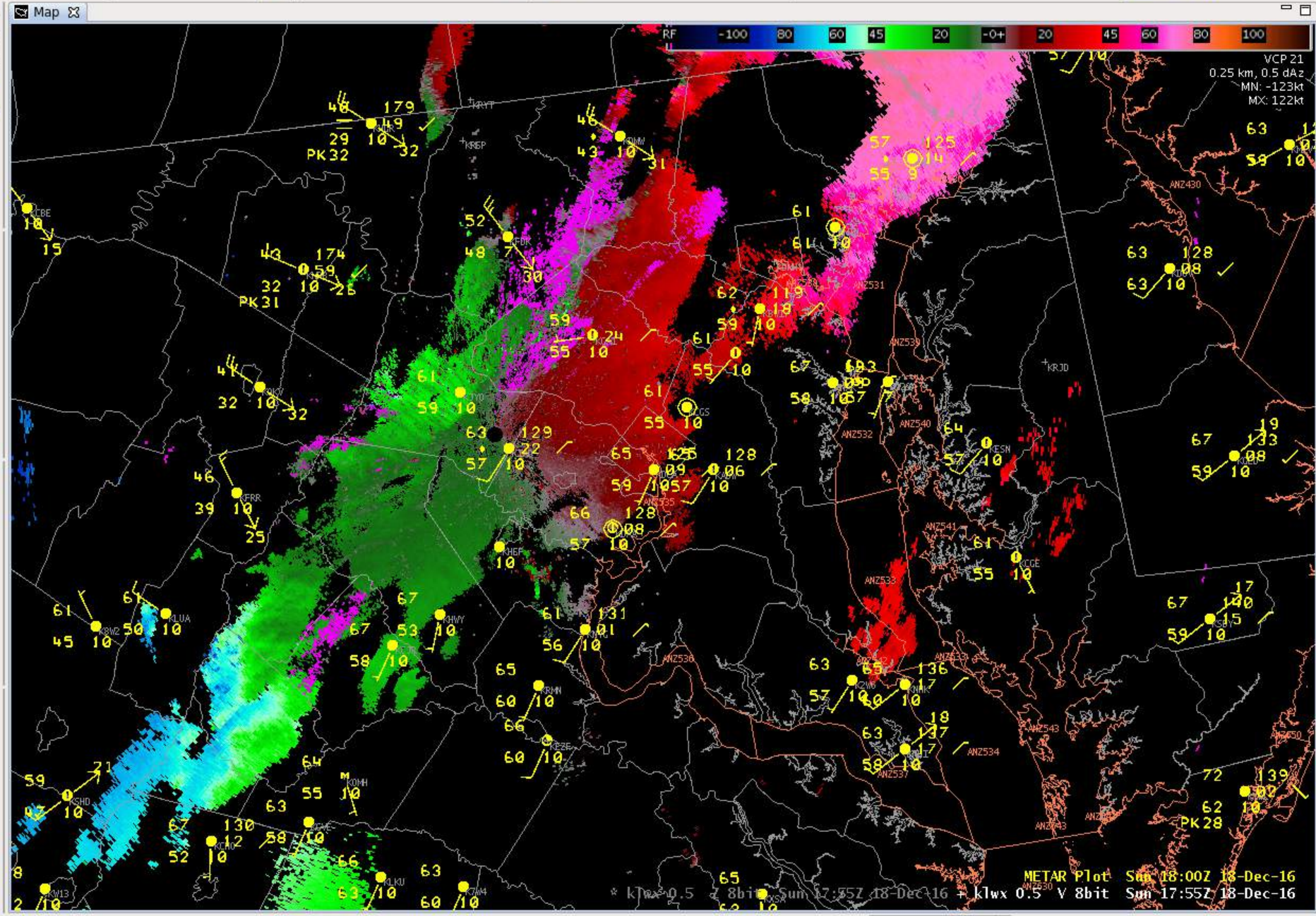
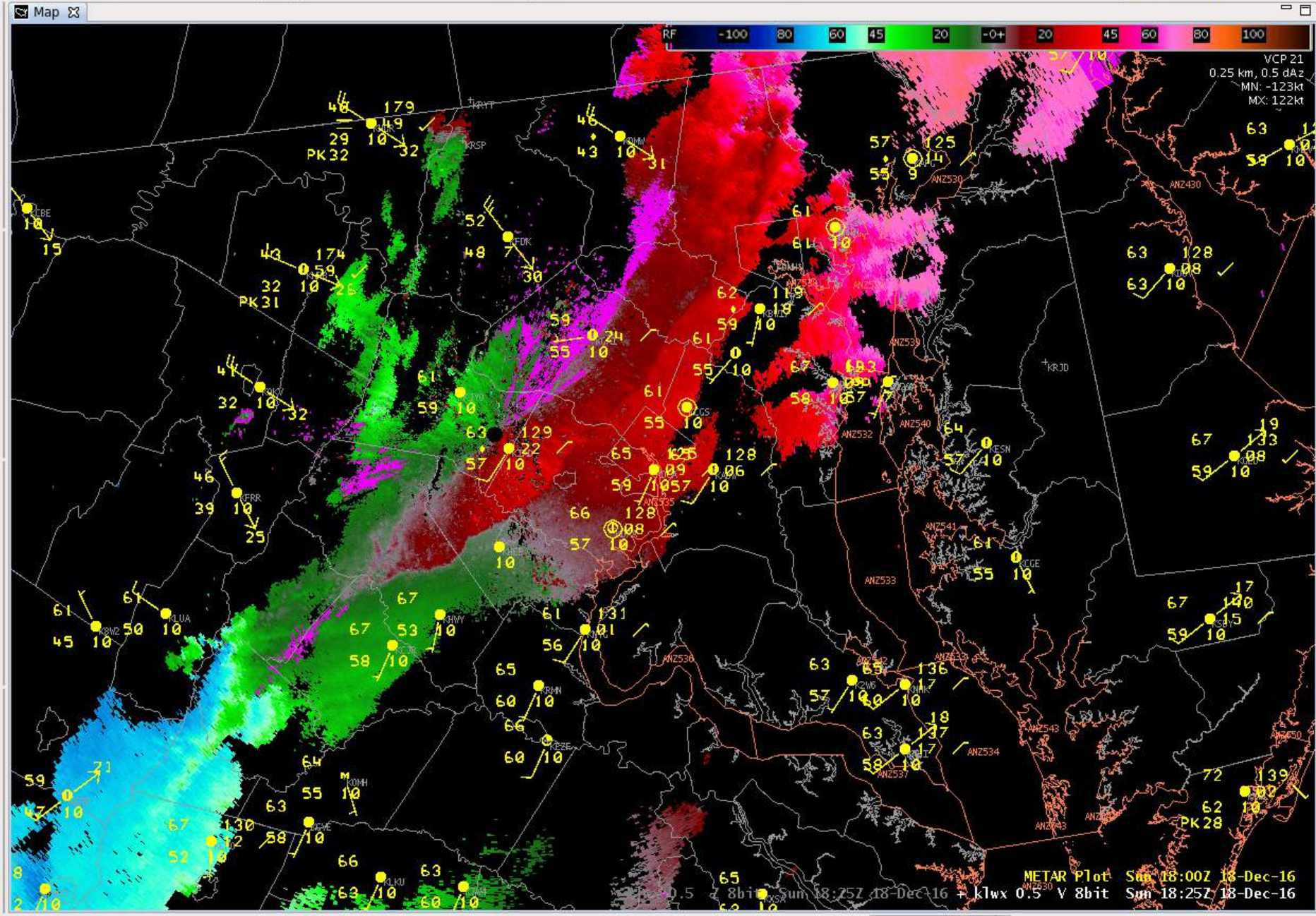


An aerial photograph of the ocean surface, showing a vast expanse of blue water with numerous small, white-capped ripples and waves. The perspective is from a high angle, looking down at the water. The text "Velocity Data" is centered in the middle of the image.

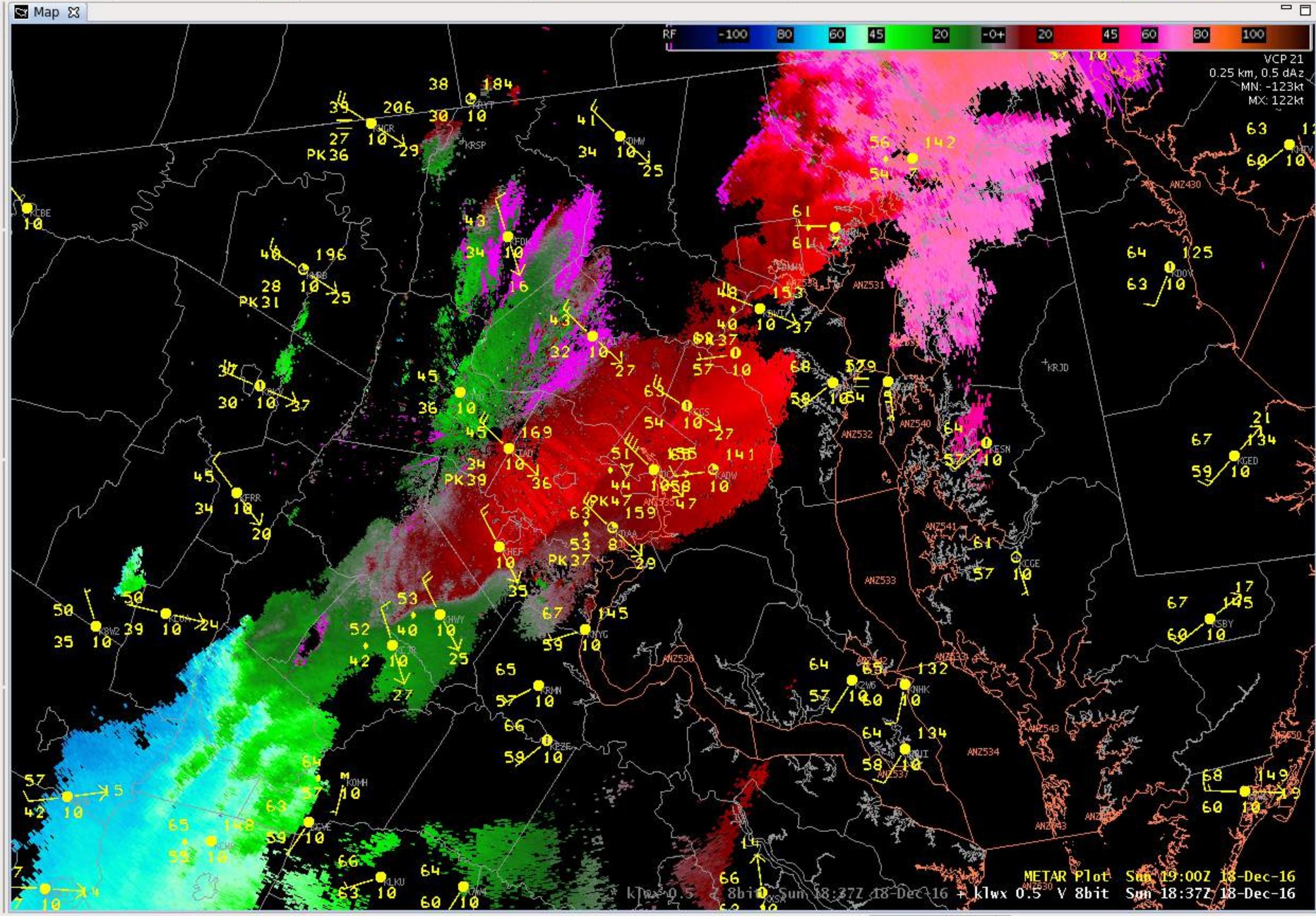
Velocity Data





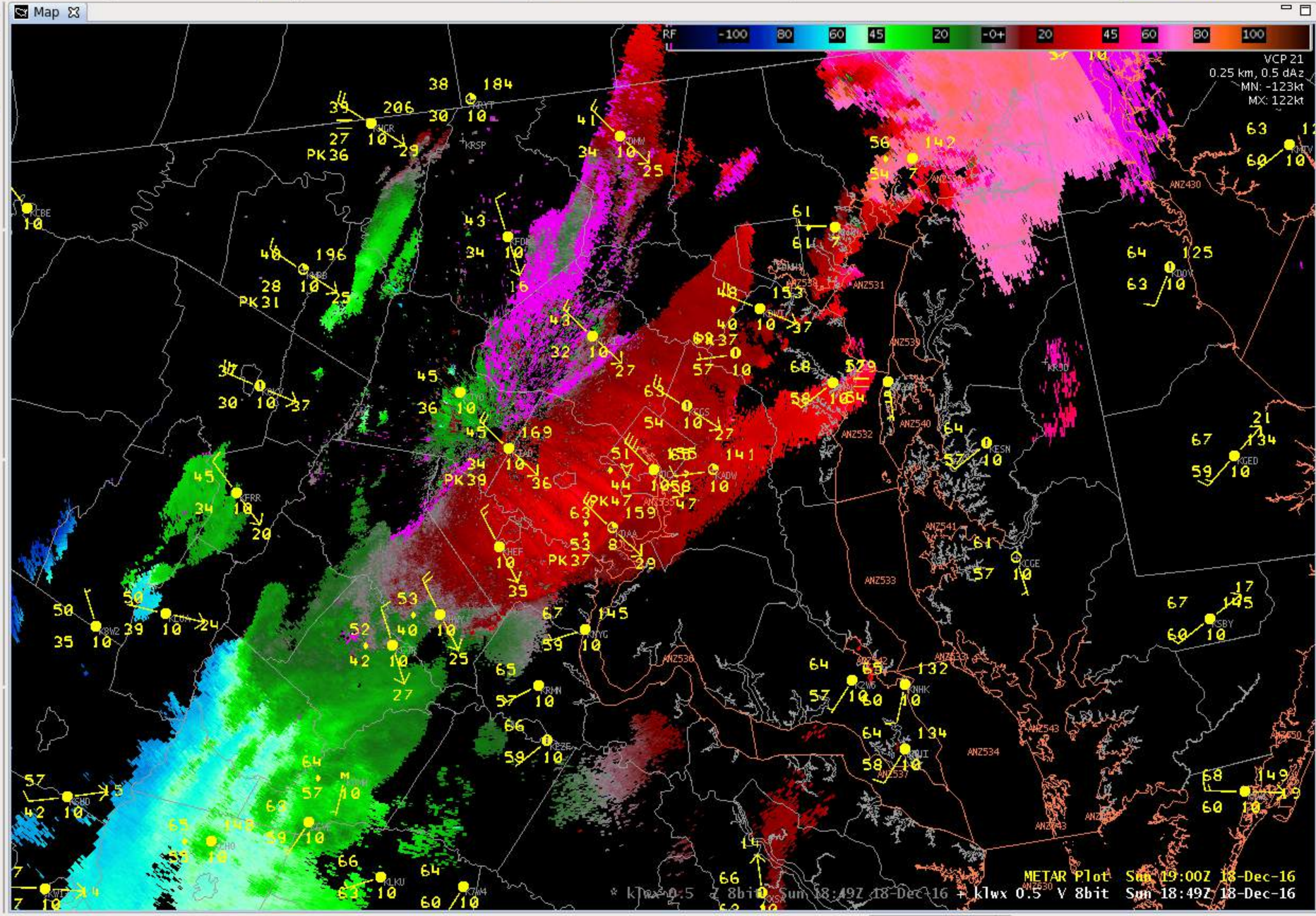


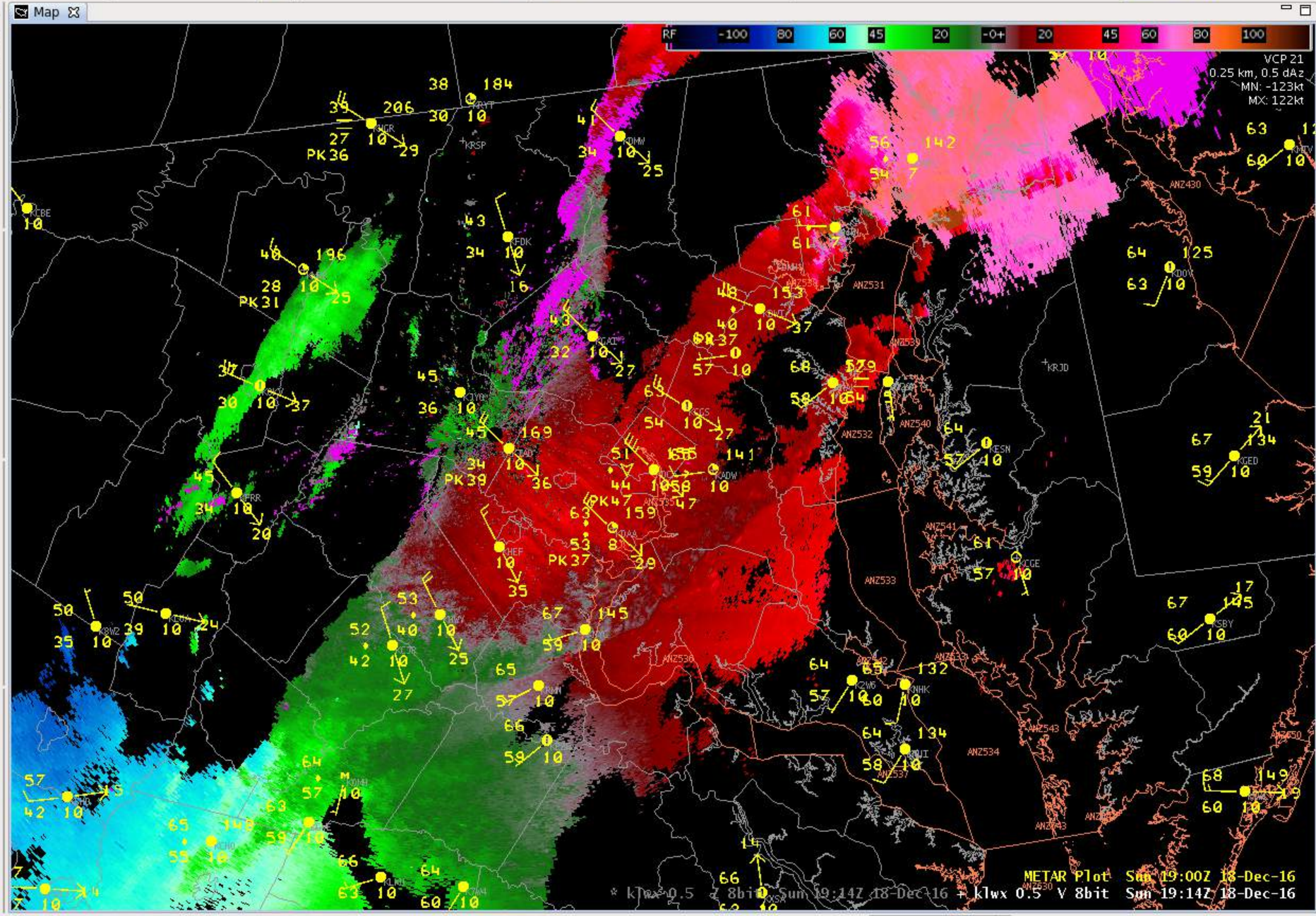
METAR Plot Sum 18:00Z 18-Dec-16
 0.5 8bit Sum 18:25Z 18-Dec-16 + kwx 0.5 V 8bit Sum 18:25Z 18-Dec-16

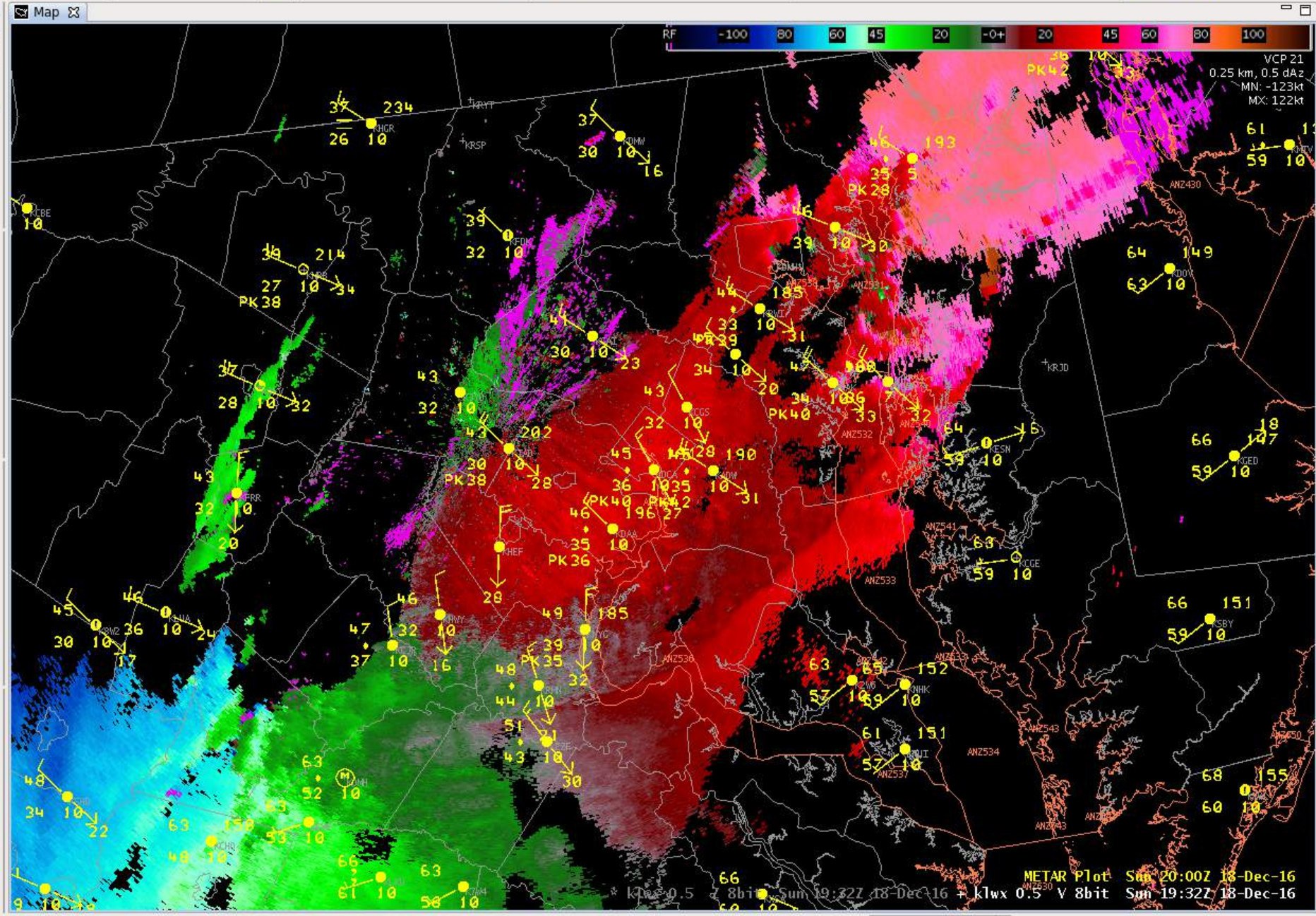


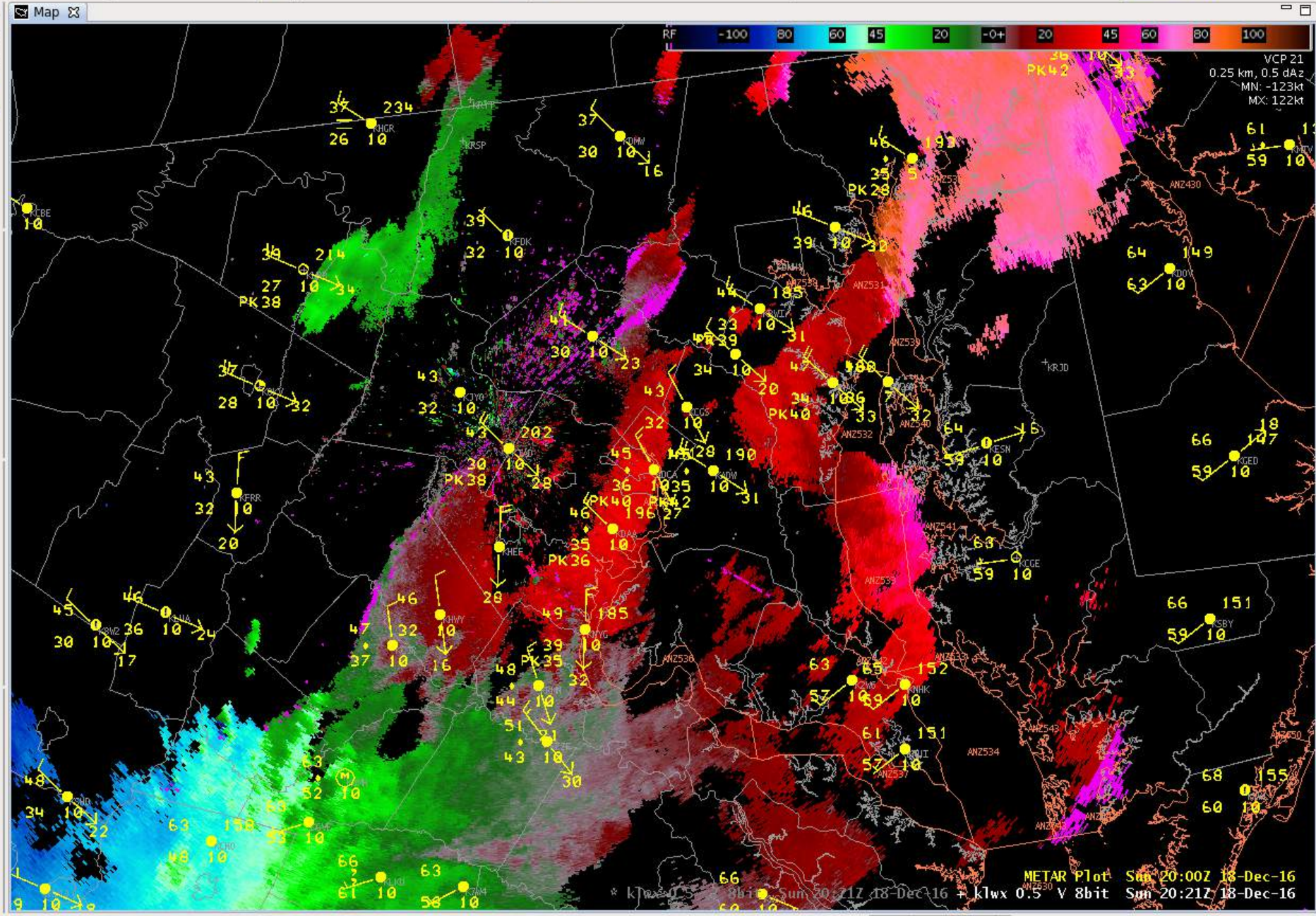
VCP 21
0.25 km, 0.5 dBz
MN: -123kt
MX: 122kt

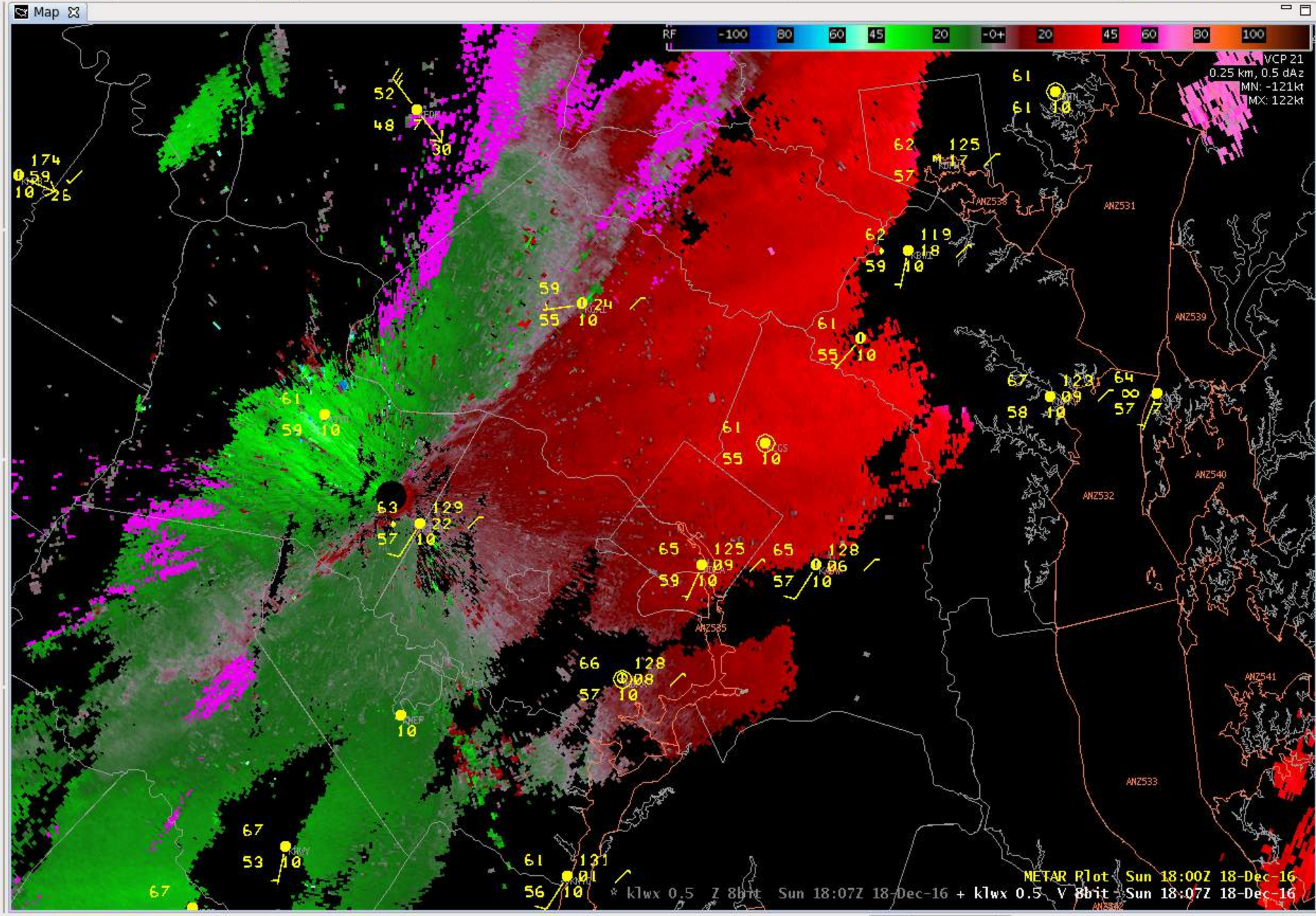
METAR Plot Sun 19:00Z 18-Dec-16
kwx 0.5 V 8bit Sum 18:37Z 18-Dec-16

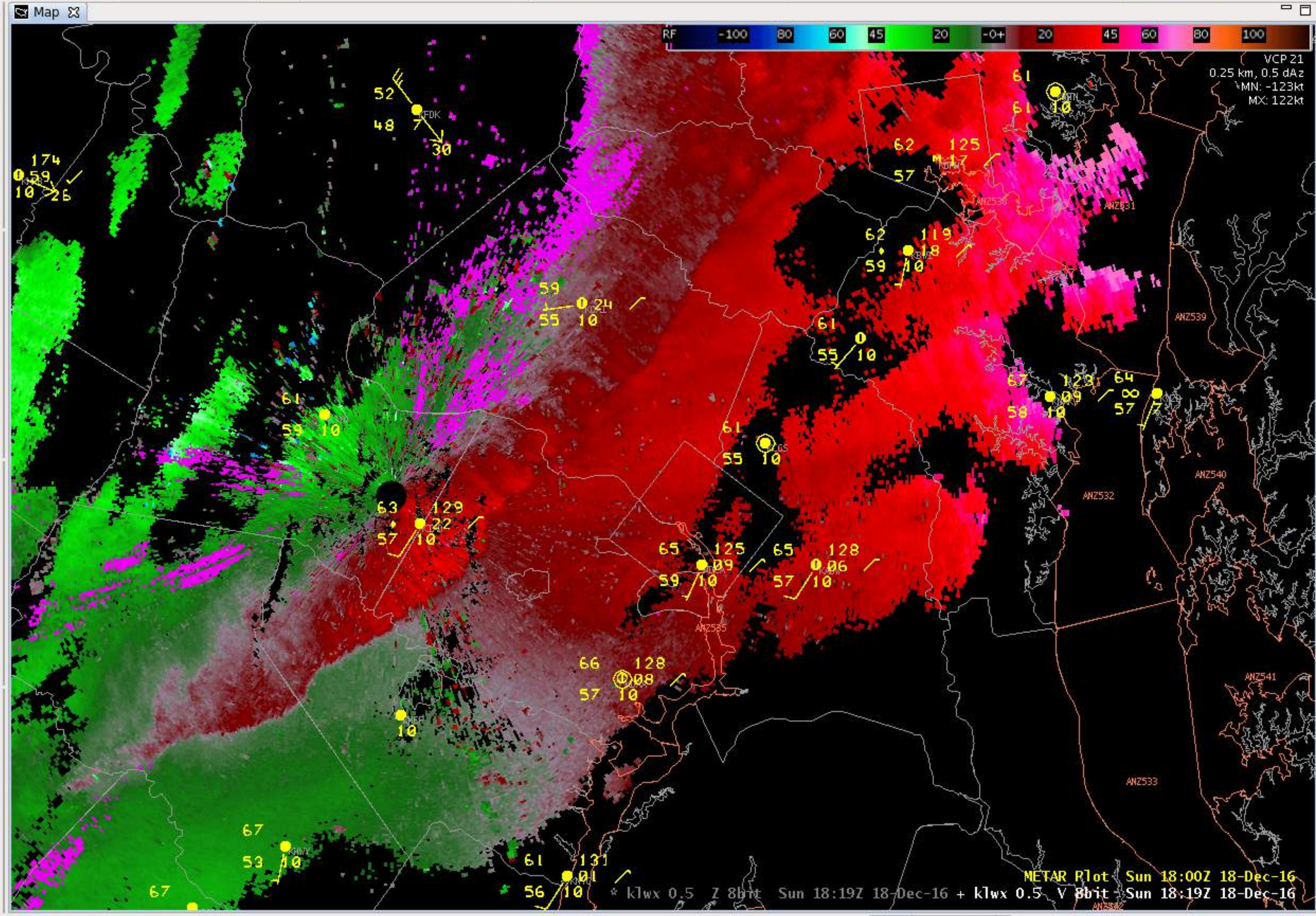


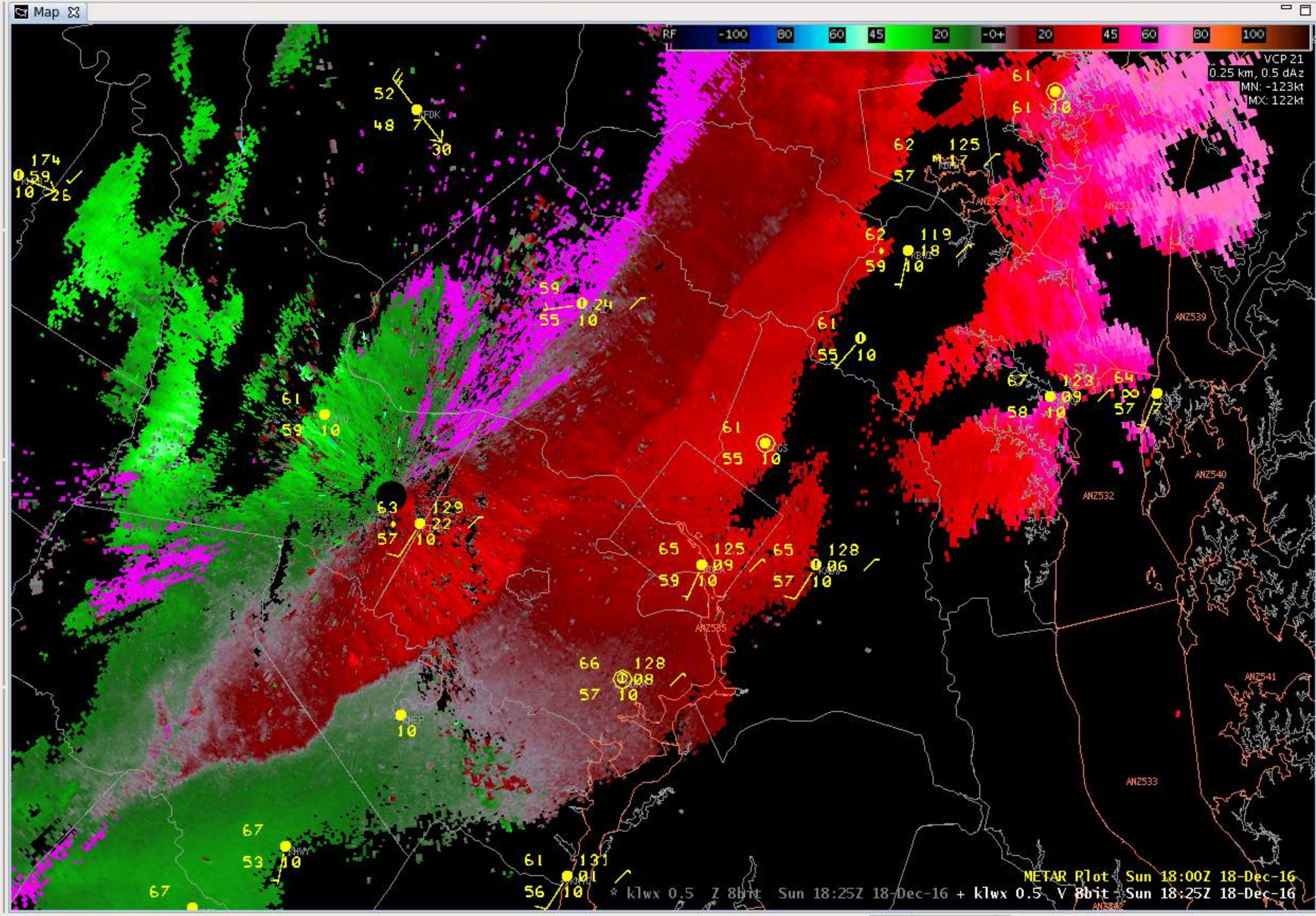


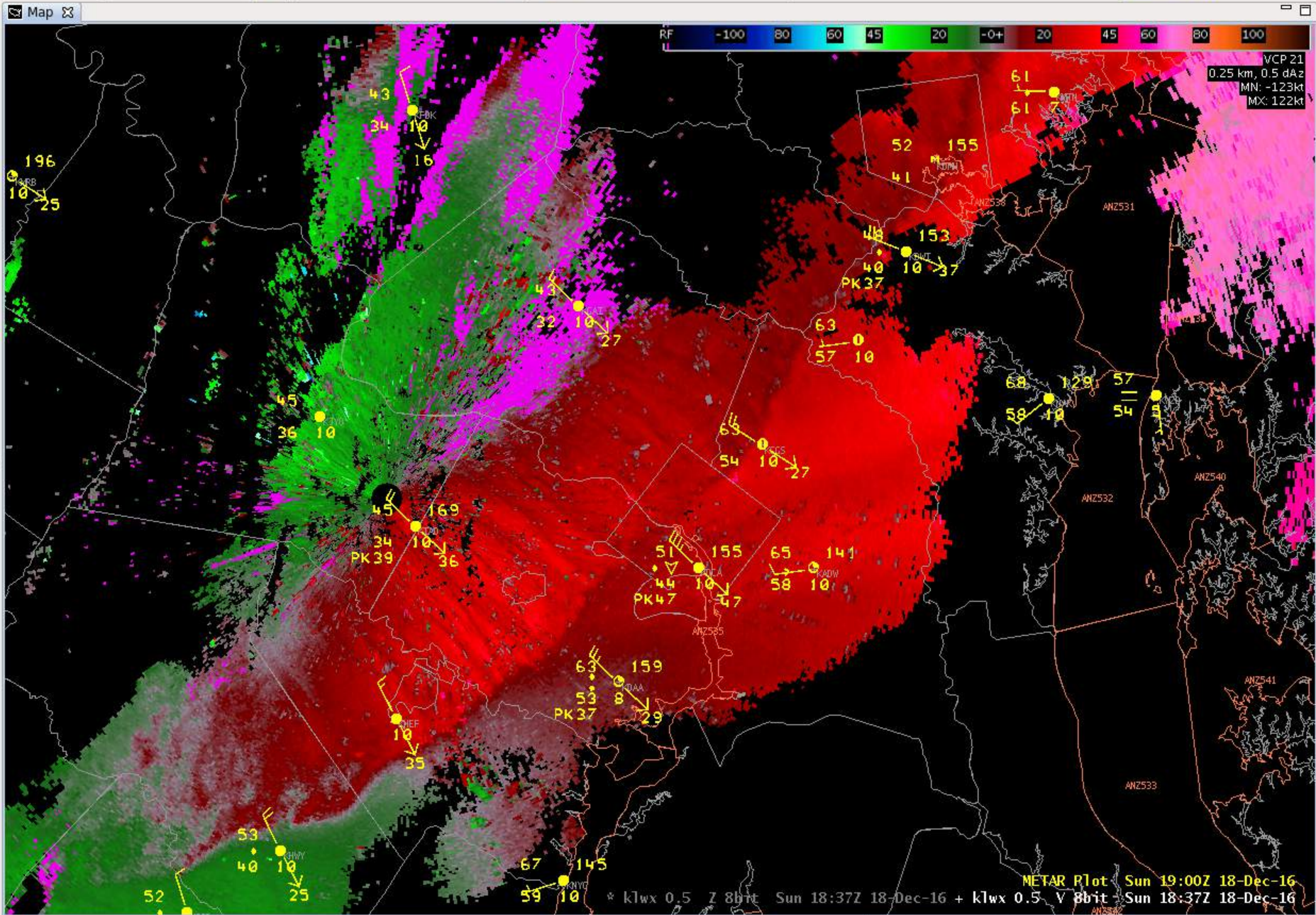


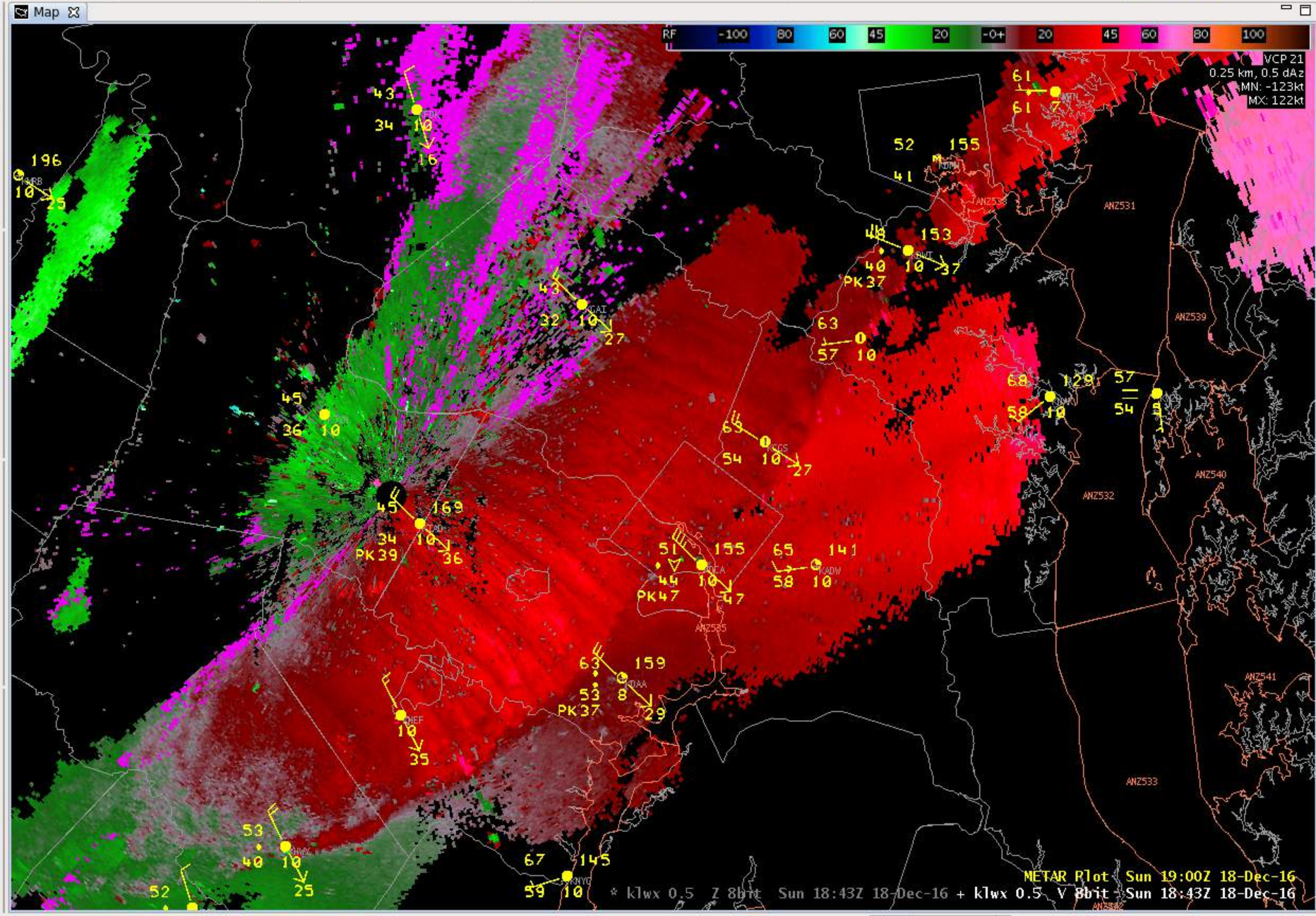


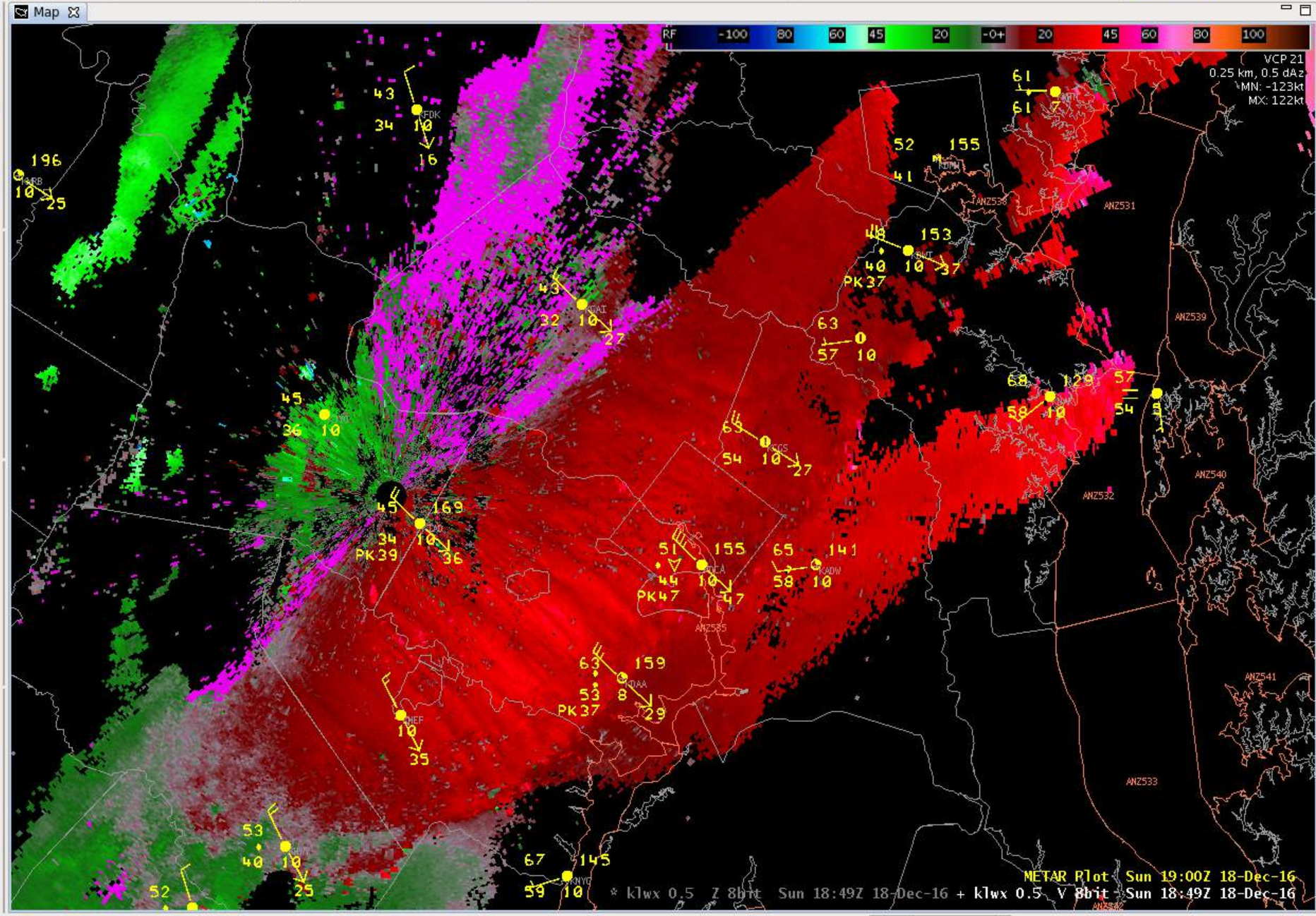






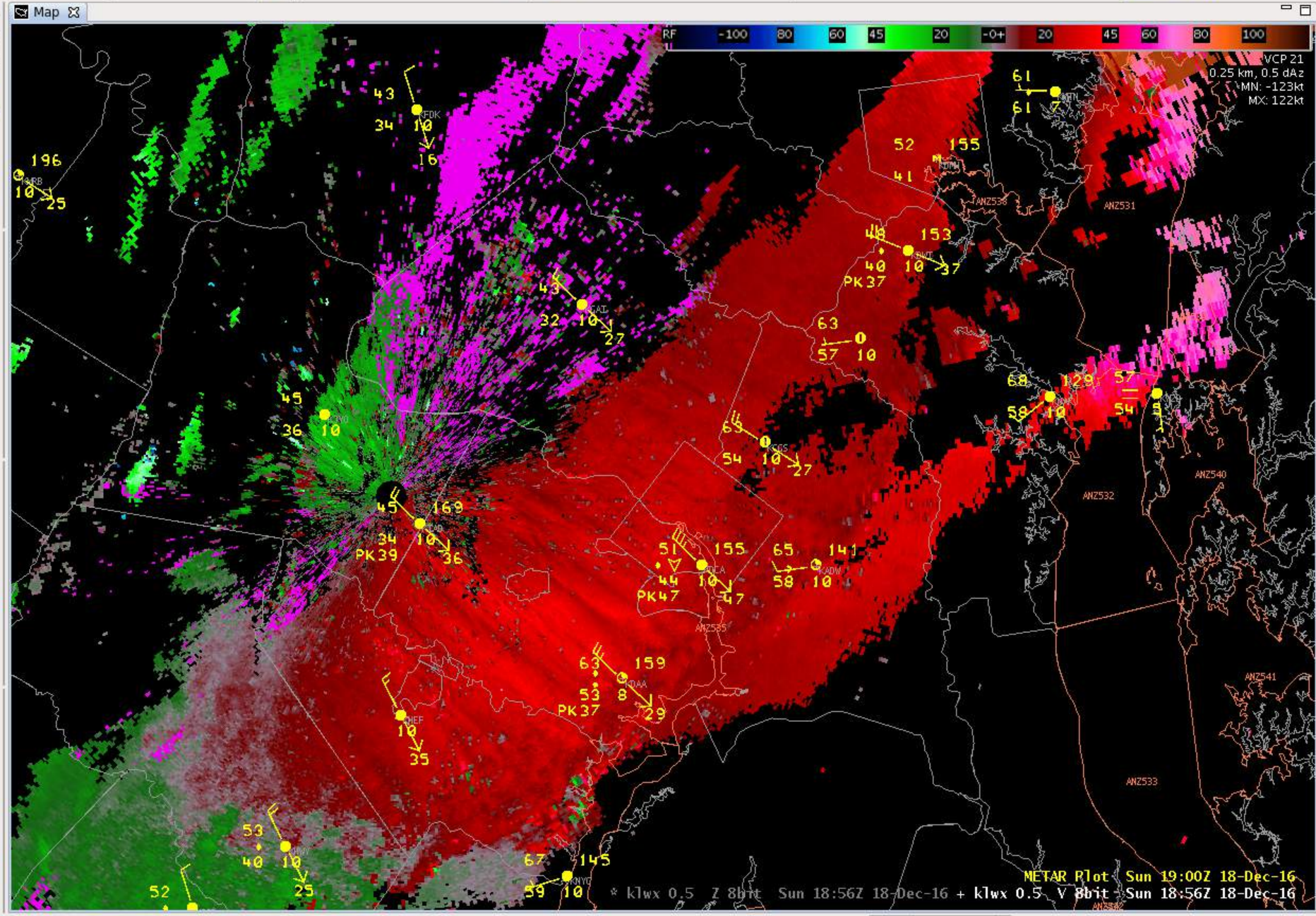


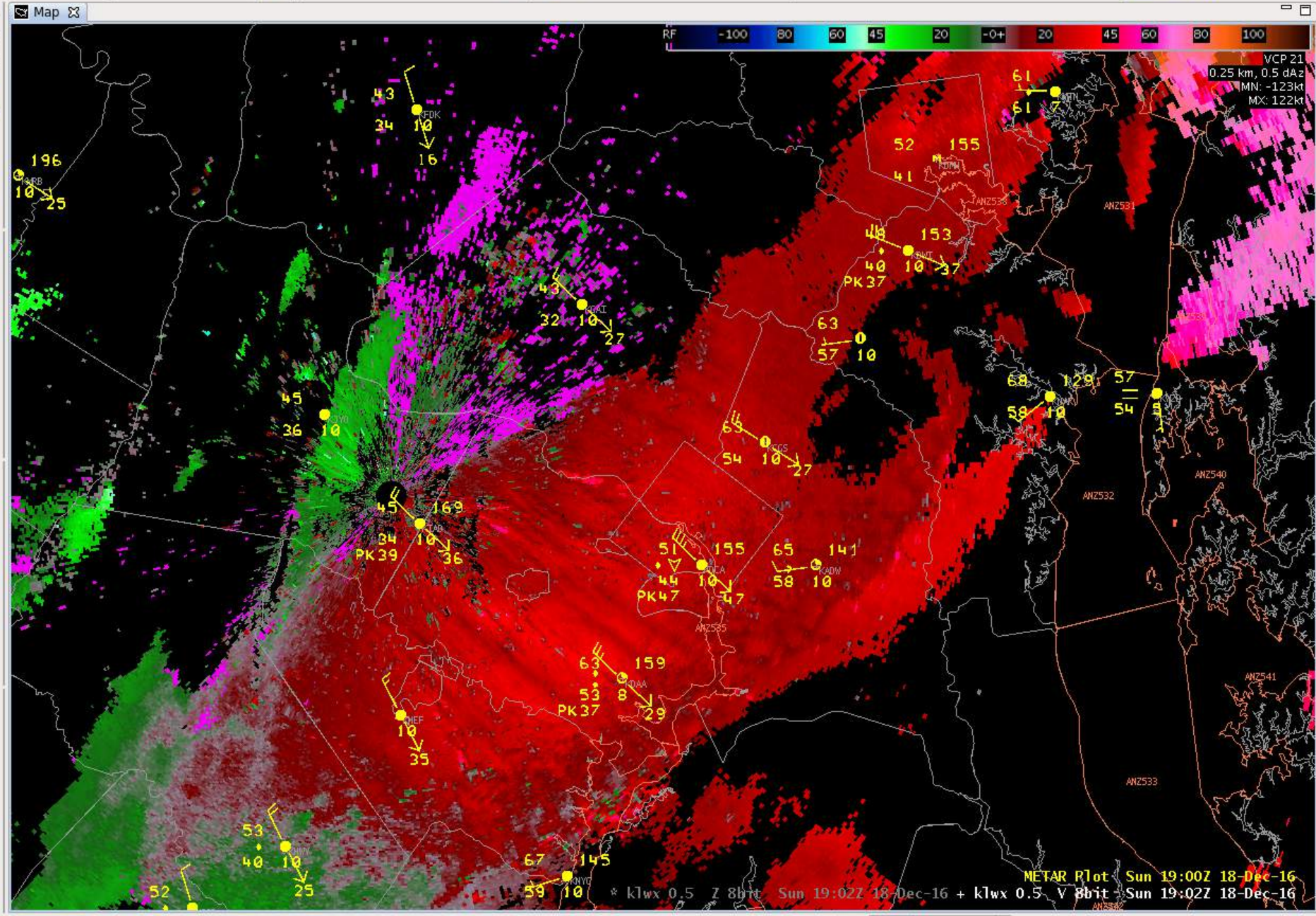


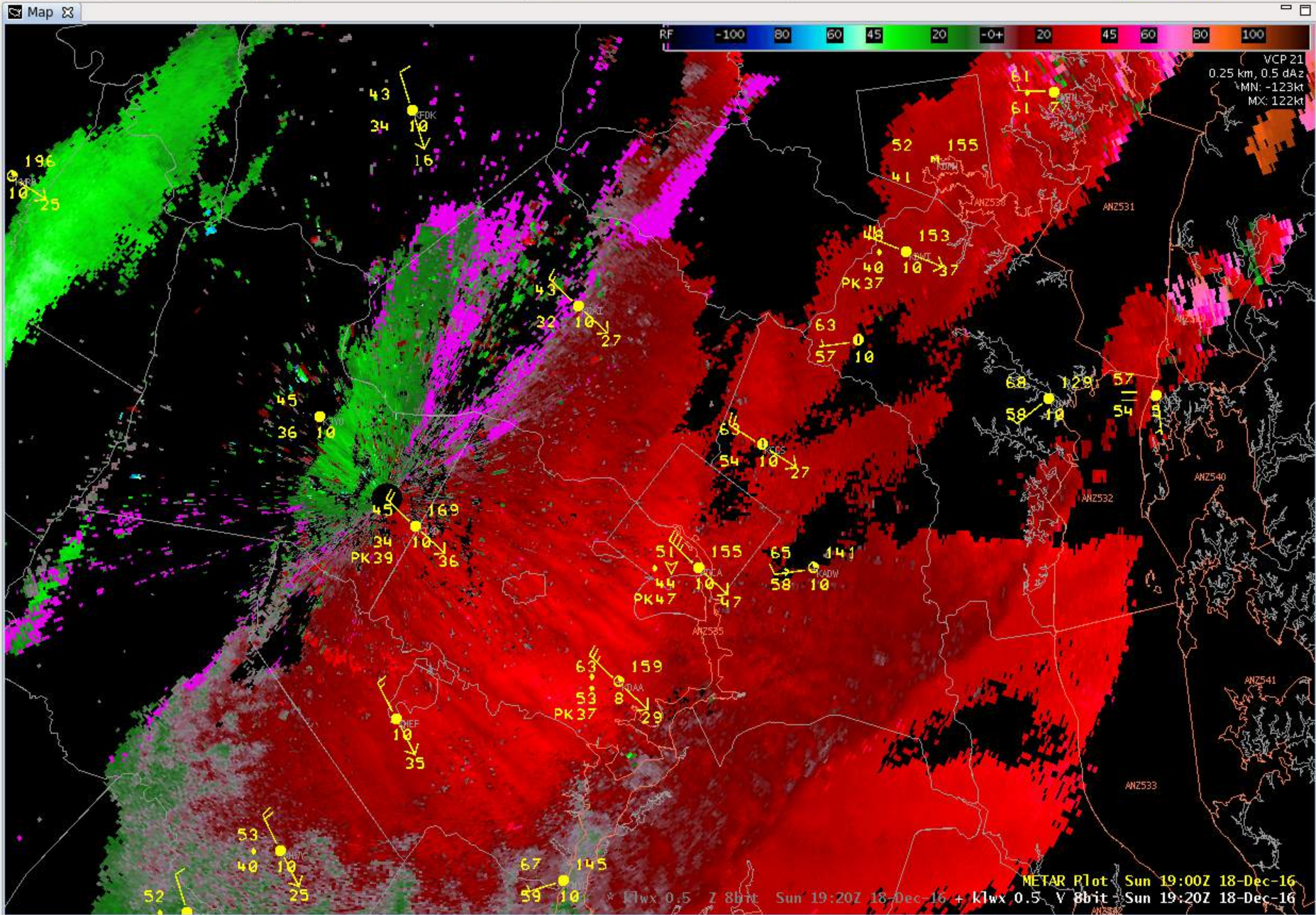


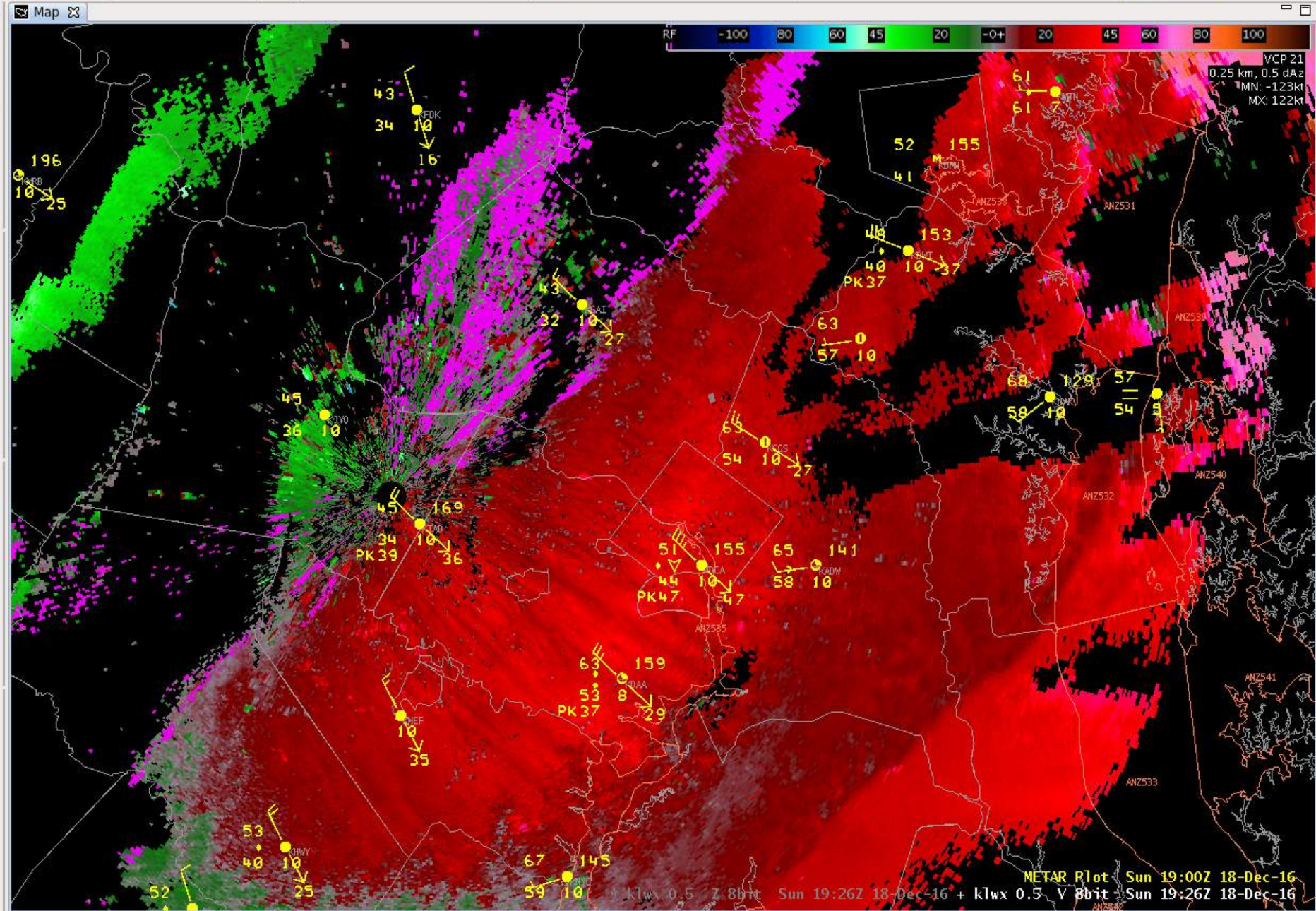
VCP 21
0.25 km, 0.5 dBz
MN: -123kt
MX: 122kt

METAR Plot Sun 19:00Z 18-Dec-16
* k1wx 0.5 Z 80ft Sun 18:49Z 18-Dec-16 + k1wx 0.5 V 8bit Sun 18:49Z 18-Dec-16



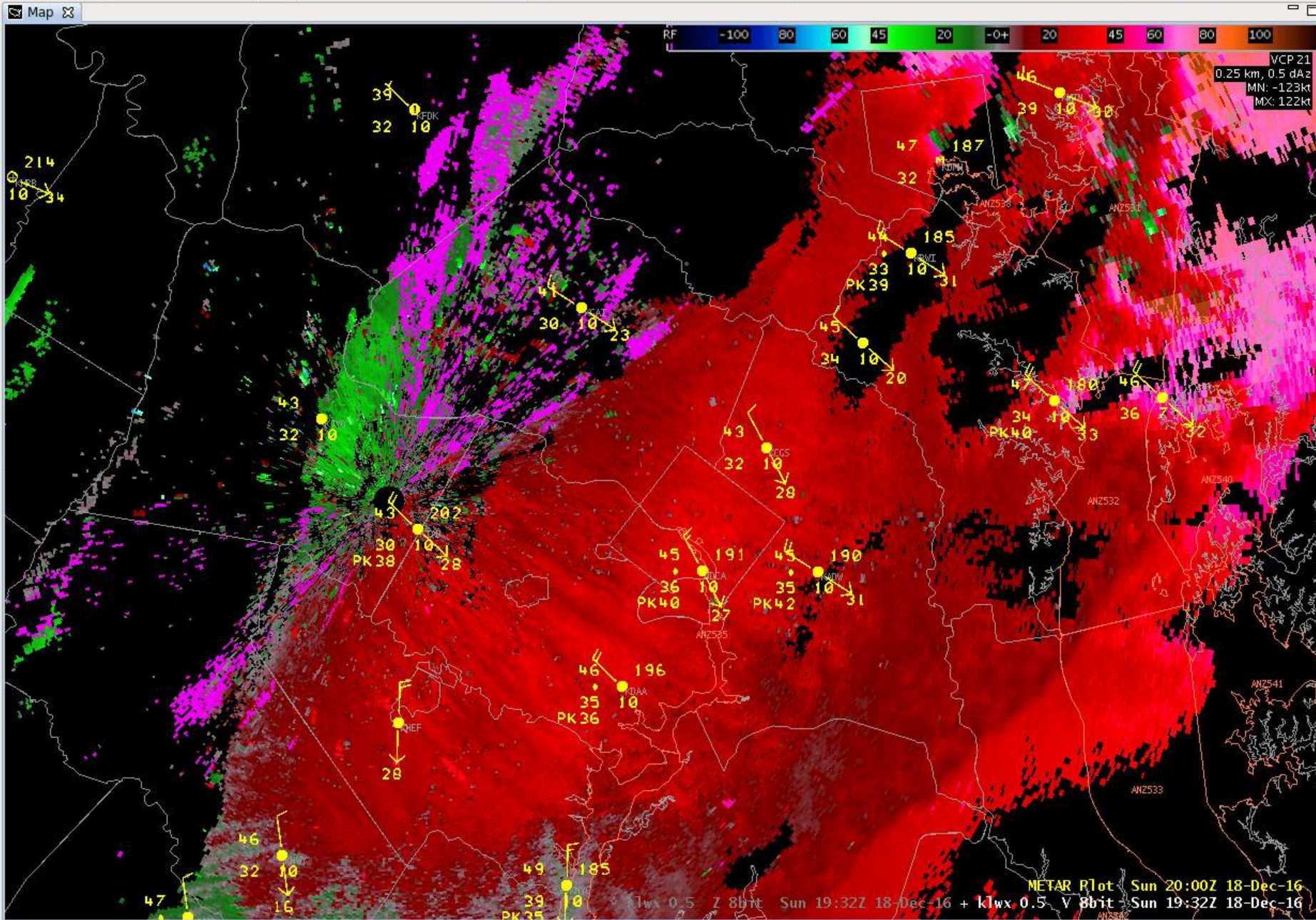






VCP 21
 0.25 km, 0.5 dBz
 MN: -123kt
 MX: 122kt

METAR Plot Sun 19:00Z 18-Dec-16
 Sun 19:26Z 18-Dec-16 + kwx 0.5 V 8bit Sun 19:26Z 18-Dec-16





NWS Services Provided

December 18, 2017 Gale Event

Hazardous Weather Outlook

Mention of gales possible Sunday first added
5:15am on Tuesday, December 13 (Day 6)

.DAYS TWO THROUGH SEVEN...WEDNESDAY THROUGH MONDAY

GALE FORCE WINDS ARE LIKELY THURSDAY AND THURSDAY NIGHT AND AGAIN
POSSIBLE ON SUNDAY.

Adjusted to read Saturday afternoon into Sunday
morning at 5:52am on Wednesday, December 14

.DAYS TWO THROUGH SEVEN...THURSDAY THROUGH TUESDAY

GALE FORCE WINDS ARE LIKELY THURSDAY AND THURSDAY NIGHT AND POSSIBLE
SATURDAY AFTERNOON INTO SUNDAY MORNING.

Re-adjusted to Sunday afternoon and evening at
5:09am Saturday, December 17 (Day 2)

.DAYS TWO THROUGH SEVEN...SUNDAY THROUGH FRIDAY

GALE FORCE WINDS ARE POSSIBLE SUNDAY AFTERNOON AND EVENING.

Coastal Waters Forecast

CHESAPEAKE BAY FROM SANDY POINT TO NORTH BEACH-
1232 PM EST SUN DEC 18 2016

...GALE WARNING IN EFFECT UNTIL 9 PM EST THIS EVENING...

...SMALL CRAFT ADVISORY IN EFFECT FROM 9 PM EST THIS EVENING THROUGH
MONDAY AFTERNOON...

.THIS AFTERNOON...W WINDS 20 KT...BECOMING NW LATE. GUSTS UP TO
35 KT. WAVES 4 FT. SHOWERS.

.TONIGHT...N WINDS 15 TO 20 KT. GUSTS UP TO 35 KT... DIMINISHING TO
25 KT LATE. WAVES 3 FT.

.MON...N WINDS 10 TO 15 KT. GUSTS UP TO 25 KT IN THE MORNING. WAVES
2 FT.

.MON NIGHT...NE WINDS 5 TO 10 KT. WAVES 1 FT.

.TUE...E WINDS 5 KT. WAVES LESS THAN 1 FT.

.TUE NIGHT...SW WINDS 5 TO 10 KT. WAVES 1 FT.

.WED...S WINDS 5 TO 10 KT. WAVES 1 FT OR LESS.

.THU...W WINDS 5 TO 10 KT. WAVES 1 FT. SHOWERS LIKELY THROUGH THE
DAY...THEN A CHANCE OF SHOWERS THROUGH THE NIGHT.

931 AM EST SUN DEC 18 2016

.SYNOPSIS FOR THE TIDAL POTOMAC AND MD PORTION OF THE CHESAPEAKE BAY/

A COLD FRONT WILL CROSS THE WATERS TODAY. HIGH PRESSURE WILL BUILD INTO THE REGION TONIGHT THROUGH WEDNESDAY. THE NEXT COLD FRONT WILL ARRIVE ON THURSDAY. SMALL CRAFT ADVISORIES MAY BE NEEDED THURSDAY NIGHT.

- SCA Issued at 3:36am Saturday for all waters

336 AM EST SAT DEC 17 2016

...SMALL CRAFT ADVISORY NOW IN EFFECT UNTIL 6 PM EST SUNDAY...

Gale Warning

- Gale Warning for Noon to 6pm Sunday

229 PM EST SAT DEC 17 2016

...SMALL CRAFT ADVISORY NOW IN EFFECT UNTIL NOON EST SUNDAY...
...GALE WARNING IN EFFECT FROM NOON TO 6 PM EST SUNDAY...
...SMALL CRAFT ADVISORY IN EFFECT FROM 6 PM SUNDAY TO 6 AM EST
MONDAY...

- Gale Warning updated for all day

CHESAPEAKE BAY FROM SANDY POINT TO NORTH BEACH MD-EASTERN BAY-
PATUXENT RIVER TO BROOMES ISLAND MD-
928 AM EST SUN DEC 18 2016

...GALE WARNING NOW IN EFFECT UNTIL 6 PM EST THIS EVENING...
...SMALL CRAFT ADVISORY REMAINS IN EFFECT FROM 6 PM THIS EVENING
TO 1 PM EST MONDAY...

Marine Weather Statement

128 PM EST SUN DEC 18 2016

...A GUST FRONT APPROACHING THE WATERS...

THE AREAS AFFECTED INCLUDE...

CHESAPEAKE BAY FROM SANDY POINT TO NORTH BEACH MD...

AT 125 PM EST...**DOPPLER RADAR INDICATED A GUST FRONT...CAPABLE OF PRODUCING WIND GUSTS TO 40 KNOTS.** THIS GUST FRONT WAS LOCATED ALONG A LINE EXTENDING FROM **22 NM NORTHWEST OF MIDDLE RIVER TO 13 NM NORTH OF KEY BRIDGE** TO 13 NM WEST OF ALEXANDRIA TO 38 NM WEST OF AQUIA CREEK...MOVING SOUTHEAST AT 35 KNOTS. **A GALE WARNING IS IN EFFECT** FOR THE ENTIRE TIDAL POTOMAC RIVER AND MARYLAND PORTION OF THE CHESAPEAKE BAY UNTIL 6PM THIS EVENING.

PRECAUTIONARY/PREPAREDNESS ACTIONS...

MARINERS CAN EXPECT GUSTY WINDS TO AROUND 40 KNOTS WITH LOCALLY HIGHER WAVES. BOATERS SHOULD SEEK SAFE HARBOR IMMEDIATELY UNTIL THESE STORMS PASS.